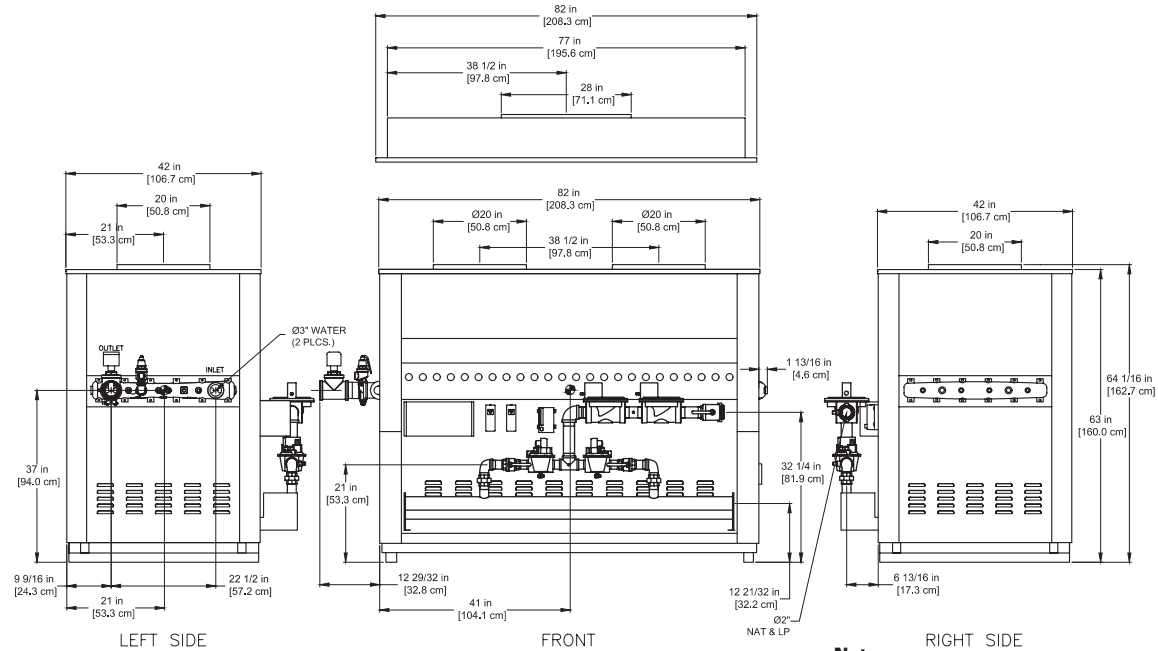


CODE OPTIONS

CSD-1	UTC 1003-616A Ignition Control UTC Lockout/Reset Control Manual Reset LWCO
FM	RM7890A Flame Safeguard (2) Motorized Valves (One w/POC) Normally Open Vent Valve Manual Reset LWCO
IRI	IRI requirements as listed in IM.4.1.1 (two motorized safety valves with N.O.V.V. no longer applies to listed atmospheric gas boilers). The addition of CSD-1 option satisfies IRI requirement for the 8800 Series.



Notes:

1. Dimensions are approximate and should not be used to "rough-in" equipment.
2. Dimensions are subject to change without notice.

BOILER CERTIFIED RATINGS & CAPACITIES

Fuel Type	Natural/Propane Gas	Boiler FLA	1*
Input BTU/hr.	3,200,000 / 938 kW	Min. Gas Pressure Required	6" WC**
Output BTU/hr.	2,624,000 / 769 kW	Max. Gas Pressure Allowed	14" WC
Electrical Requirements	120VAC / 1 ph / 60 hz	Operating Weight	1527 lbs. / 693 kg.

BOILER TEMPERATURE RISE / PRESSURE DROP

30°F / 16.7°C				35°F / 19.4°C			
Flow Rate		Pressure Drop		Flow Rate		Pressure Drop	
GPM	L/s	Ft	kPa	GPM	L/s	Ft	kPa
174.9	11.0	7.2	21.1	149.9	9.5	5.4	15.8

BOILER / WATER HEATER TRIM & CONTROLS

Main Gas Valve	Honeywell (2) V8944B 1-1/4"	High Limit (HB/HW)	Honeywell L4008E
Firing Valve	Honeywell (2) B200T1041 1-1/4"	Ignition Control	Honeywell S8610M
Safety Valve	Honeywell (2) V88A 2"	Pilot Regulator	White-Rodgers 25M
Operating Control (HB)	Honeywell L4008A - On/Off	Relief Valve - HW	3/4" x 3/4" set @125 psi
Operating Control (HW)	Honeywell L6008A - On/Off	Relief Valve - HB	1-1/4" x 1-1/2" set @ 50 psi
Operating Control (HB/HW)	Honeywell L6008G - 2 Stg.	Flow Switch	TACO
Operating Control (HB/HW)	Tekmar BTC- 4PA- 4 Stg.		

WATER HEATER HOURLY RECOVERY CAPACITY (GPH & LPH)

40°F	22°C	60°F	33°C	80°F	44°C	100°F	56°C	120°F	67°C	140°F	78°C
7875	29811	5250	19874	3938	14905	3150	11924	2625	9937	2250	8517

A.S.M.E.

ASME Sect IV Htg Surface	263.41 Sq. Ft. / 24.47 Sq. M.	Design Data	Max. 160 psig & 250 °F
Water Volume	4.8 gal / 18.2 Liters		

* Add circulator amps.
** For incoming gas pressures lower than 6" WC natural or 11" WC propane, consult factory.

REP FIRM	_____	<h1 style="margin: 0;">8800 3200</h1> <p style="margin: 0;">Category I Appliance Must be vented into a negative pressure vent system.</p> <p style="margin: 0;">RBI® A Division of Mestek, Inc. Westfield, MA 01085 (413) 568-9571</p> <p style="margin: 0; font-size: small;">RELIABLE. BOLD. INNOVATIVE.</p>
SUBMITTED BY	_____	
JOB NAME	_____	
ARCHITECT	_____	
ENGINEER	_____	
CONTRACTOR	_____	
DATE	_____	

**8800 water heaters are not available for sale in the US and Ontario, Canada markets due to DOE regulations.
8800 boilers are not available for sale in Ontario, Canada.**